

WEIGHT CLASS
6.5 TONNE
| TCR50-2 |



STAGE V ✓
READY



TRACKED DUMPER

TAKEUCHI
Japanese for Reliability

New TCR50-2 Tracked Dumper with left & right skip-tipping

The new TCR50-2 tracked dumper offers greater functionality, performance, comfort and serviceability.

With an ample 65-degree skip tip angle and 3,700kg maximum loading weight, operators' always get a maximum load discharged with a single operation.

The TCR50-2 features left and right skip-tip functionality (180 degree) offering efficient sideways dumping in restricted areas, this limits the need to continually reposition the machine.





COMFORTABLE OPERATOR STATION

A completely redesigned operator station features an intuitive 5.7" colour multi-informational display.

In-cab features include fully adjustable suspension seat, radio with USB, Bluetooth and aux inputs. With a large cup holder, plenty of operator foot-room and air conditioning as standard operators get the maximum all day comfort.



STAGE V READY



FULLY HYDRAULIC CONTROL

Hydraulic joystick controls deliver smooth operation for travel function and dump body function while foot throttle allows more economic and intuitive operation for engine speed.





ADDED SITE SAFETY

The new TCR50-2 is packed full of on-site safety features including 180 degree rear view colour camera with auto activation, operators can customise the camera settings.

Visibility is maximised with 3 rear view mirrors, LED work lights and tinted sun visor. The cab window has rear screen wash wipe function and window vents.

The pre-wired beacon switch and internal power socket come as standard. The customisable travel alarm has option for forward and reverse travel or only as reverse alarm.

Added safety on site for operators, with roof and cab glass guard fitted as standard and anti-slip walkways and steps.

A robust and heavy duty undercarriage, incorporating removable steel engine sump guard plates.

The 65 degree tilting skip comes with a skip body lock and 4 anchor points make for secure transporting.



ENGINE

- EU Stage V Turbocharged Yanmar Engine
- Automatic Fuel Bleed System
- DOC+DPF+SCR Exhaust After Treatment
- Double Element Air Cleaner
- Automatic Deceleration
- High Capacity Fuel Tank
- Engine Safety Start System on Left Console
- Engine Auto Stop
- Fuel Transfer Pump

UNDERCARRIAGE & FRAME

- Double Flanged Track Rollers
- 2-Speed Travel with Automatic Shift
- High Torque Planetary Final Drive
- 450 mm Rubber Crawlers

ELECTRICAL

- 5.7" Color Multi-Informational Display
- Sealed Rocker Switches
- 12 volt System with 80 amp Alternator
- LED Lighting - Forward Facing, Front and Rear Cab
- Travel Alarm
- Beacon Lamp Switch
- Rear View Monitor
- Air Conditioning
- Immobiliser
- Radio





MAXIMUM ACCESS & EASY SERVICE

The TCR50-2 is designed for maximum easy servicing. Well positioned grip-steps and handle bars provide safe access to service areas at the top of the machine for daily routines with 500 hour service intervals.

- Lockable service and refuelling access panel. Access to fuel and air filter, refuelling system, grease gun and tool bags all at ground level.
- Fully lockable battery and fuse compartment. Access to battery fuses and expansion bottle.
- Lockable AD blue tank. Filling point with refilling sight gauge.
- Top cover engine access. Easy access to dipstick, engine oil and coolant filling points.
- Maintenance free track rollers and maintainable roller pivot points.
- Standard auto fuel transfer pump enables operator to refill the tank with fuel more easily and quickly.



Well positioned full colour enhanced visual display unit - warning indicators, rpm, hour meter, fuel, battery charge, temperature, oil pressure and maintenance alerts. New brand familiar switch brigade.



TFM - TAKEUCHI FLEET MANAGEMENT

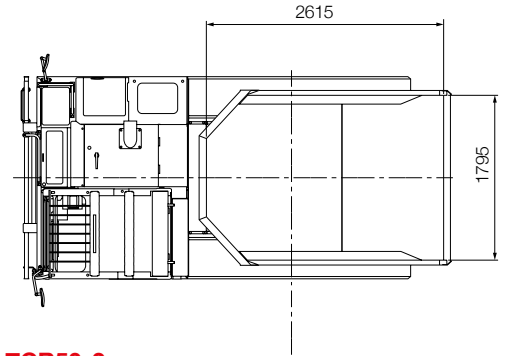
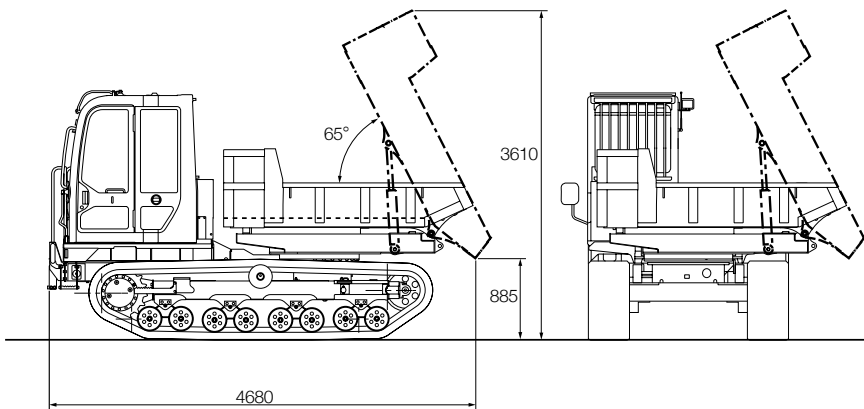
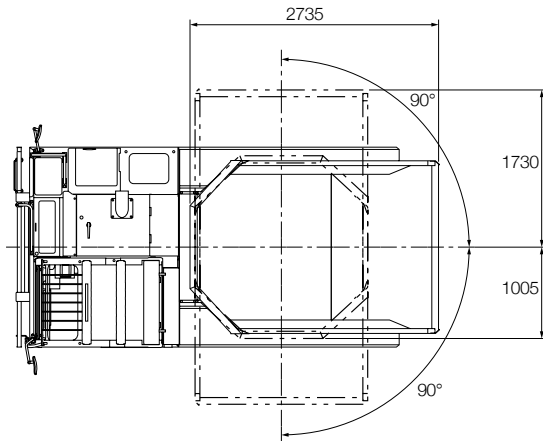
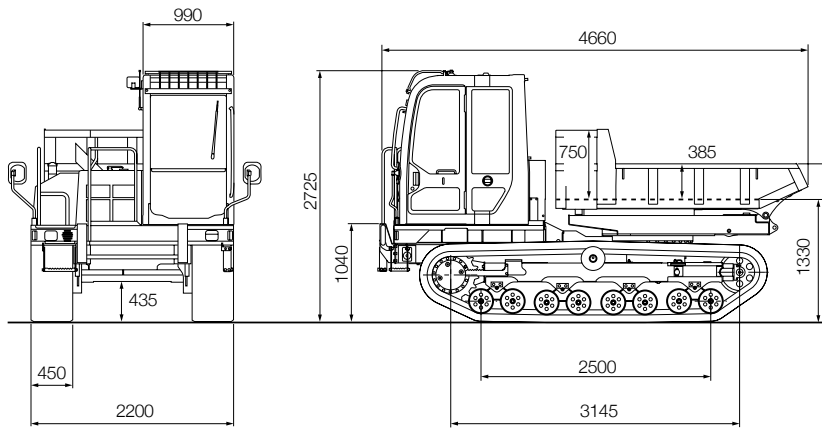
Takeuchi Fleet Management is designed to help you better manage your fleet and lower your overall operating costs.



PROTECT YOUR INVESTMENT

The TCR50-2 now comes with the TSS Takeuchi Security System as standard.





TCR50-2

Standard UK Specification

Engine	
Make	YANMAR
Model	4TNV94FHT-NTBC
Rated Output (kW)/rpm	88.4 kW / 2,500 min ⁻¹
Displacement (ml)	3053
Amount of CO2 emission* (kWh)	732
Starter (V-kW)	12-3
Alternator (V-kW)	12-0.96
Battery (IEC 60095-1) (V-A.h)	12-90
CCA (A)	795

Operating Performance	
Operating Weight (kg)	6550
Dumped Body Capacity - Heaped (m ³)	2.055
Struck (m ³)	1.15
Maximum Loading Weight (kg)	3,700
Travel Speed: 1st (km/h)	7.0
2nd	9.5
Gradeability	30°
Ground Pressure:	
Dump Body Full (kPa)	42.0
Dump Body Empty (kPa)	27.0

Hydraulic System	
P1.P2	Variable Displacement Pump
Flow Rate	122.5m L/min
Relief Pressure	34.5 MPa

Fluid Capacities	
Engine Lubrication (l)	10.5
Cooling System (l)	18.5
Fuel Tank (l)	127.0
Hydraulic Reservoir Capacity (l)	44.0
Hydraulic System (l)	84.0
DEF Tank (l)	13.8

Safety & Health	
Vibration - Levels Hand / Arm	< 2.5 m/s ²
Body	< 0.5 m/s ²
Noise Level - Sound Power Level	LWA 102 dB
Slew Brake	Wet Friction Plate

All dimensions unless otherwise stated are in millimeters.

6/2020

For more information locally

call us direct, or contact:



Takeuchi Mfg (UK) Ltd, Unit E2B Kingsway Business Park,
John Boyd Dunlop Drive, Rochdale, Lancashire OL16 4NG
Tel: 01706 657 722 Fax: 01706 657 744

Southern Depot at 20 Colthrop Business Park
Colthrop Lane, Thatcham, Newbury, Berks RG19 4NB
Tel: 01635 877 196 Fax: 01635 877 195

www.takeuchi-mfg.co.uk Email: sales@takeuchi-mfg.co.uk

Takeuchi machines come with a 2 year/2000 hours warranty as standard. Warranty exceptions to 1 year: fuel injection systems, electrical components, paint work and emission control items.

In accordance with our established policy of constant improvement, we reserve the right to amend these specifications at any time without notice. Photographs shown may feature non-standard equipment.

TAKEUCHI
Japanese for Reliability